



A Plan to Improve
Pedestrian & Bicycle Amenities

[Complete Streets Policy](#)

[Bicycle & Pedestrian Network Priority Plan](#)

These documents laid the foundation for the Town to focus on making improvements to the Town's pedestrian amenities.

1. What do we need?

Determine where we need to make improvements.



[SIDEWALK INVENTORY MAP](#)



2. Where should we make improvements?

Create a plan to prioritize areas that will be targeted first for new sidewalks.



[PEDESTRIAN & BICYCLE IMPROVEMENT PLAN \(BPIB\)](#)

Create a map using the BPIB criteria.



[BPIB CRITERIA MAP](#)

Calculate prioritization scores using spreadsheet.



[BPIB CRITERIA SCORES](#)

Create a color-coded map showing top priority areas for sidewalk improvements.



[BPIB PRIORITIZATION MAP 2020](#)



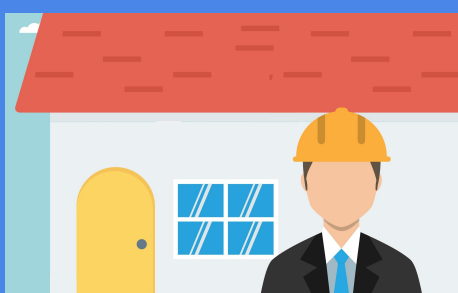
3. Who is responsible for the improvements?



The DPW will create a 5-year Sidewalk & Bicycle Capital Improvement Plan and update annually according to the BPIB.

[PEDESTRIAN & BICYCLE IMPROVEMENT PLAN \(BPIB\)](#)

The adoption of a proposed "Sidewalk Installation Policy" will require Commercial Development to install sidewalks adjacent to projects according to the Sidewalk Installation Policy.



[SIDEWALK INSTALLATION POLICY](#)